

FileDistributor

User's Guide

Version1

FileDistributorUser'sGuide

Version1

PUBLISHEDBY

GraphicPrepressSolutions

Copyright©1999–2000byGraphicPrepressSolutions.

Adobe, Acrobat, the Acrobat logo, Adobe Garamond, Carta, Distiller, FrameMaker, Illustrator, Minion, PhotoShop, the PhotoShop logo, Poetica, PostScript, and the PostScript logo are registered trademarks of Adobe Systems Incorporated. Adobe PS and InDesign are trademarks of Adobe Systems Incorporated. Apple, Macintosh, Mac, and TrueType are trademarks of Apple Computer, Inc., registered in the United States and other countries. Microsoft and Windows are either registered trademarks or trademarks of Microsoft Corporation in the United States and/or other countries. UNIX is a registered trademark of The Open Group.

All other brand or product names are the trademarks or registered trademarks of their respective holders.

This publication and the information herein is furnished AS IS, is subject to change without notice and should not be construed as a commitment by GraphicPrepressSolutions. GraphicPrepressSolutions assumes no responsibility or liability for any errors or inaccuracies, makes no warranty of any kind with respect to this publication, and expressly disclaims any and all warranties of merchantability, fitness for particular purposes and noninfringement of third party right.

Contents

1Introduction

- 1.1Basicideas
- 1.2UsewithGFM-system

2Installationandconfiguration

- 2.1Beforeinstalling
- 2.2Installation
- 2.3Configuration

3Basicoperation

- 3.1StartFileDistributor
- 2.2StopFileDistributor

4Managingqueues

- 4.1Introductiontoqueues
- 4.3CreatingaHotFolderqueue
- CreatingaTCP-socketinputqueue

5ManagingSpoolFoldergroups

- 5.1IntroductiontoSpoolFolders
- 5.2CreatingaSpoolFoldergroup
- 5.3EditaSpoolFoldergroup
- 5.4DeleteaSpoolFoldergroup
- 5.5DeleteaSpoolFoldergroupitem

6ManagingTCP/IPsocketgroups

- 6.1IntroductiontoTCP/IPsocket
- 5.2Creatinga TCP-socket group
- 5.3Edita TCP-socket group
- 5.4Deletea TCP-socket group
- 5.5Deletea TCP-socket groupitem

7ManagingUserDatagramProtocolgroups

8ManagingFileTransferProtocolgroups

- 8.1IntroductiontoFTP
- 5.2CreatinganFTPgroup
- 5.3EditanFTPgroup
- 5.4DeleteanFTPgroup
- 5.5DeleteanFTPgroupitem

9ManagingLaserWritergroups

10ManagingWindowsPrintergroups

- 10.1IntroductiontoWindowsPrinter
- 10.2CreatingWindowsPrintergroup
- 10.3EditaWindowsPrintergroup
- 10.4DeleteaWindowsPrintergroup
- 10.5DeleteaWindowsPrintergroupitem

Section1

Introduction

This guide explains how to install, configure and use the File Distributor application from GraphicPrepress Solutions.

The application should be used to distribute files and data with different protocols and methods to remote systems. For example could the application be used to load balance files and data to any number of folders, LaserWriter's or TCP sockets. The application can also be used to distribute files with the FTP protocol to Windows Printers.

Basic ideas

There are some basic ideas in File Distributor that you should be familiar with before proceeding with the installation and configuration. The basic function of the application is that it will receive data from different inputs and then distribute the data by different protocols and methods.

Input as Queues

The application can receive files or data by 'Hot Folders' and TCP-sockets. You will define your inputs as *queues*. Each queue is one Hot Folder or one TCP-socket. The queue will be connected to an output *group* and in this way will data captured by the queue be sent to the group.

Of course can other tools and software's add method show data can be inputted. For example can NT be configured to act as an FTP-server and the Host directory for the FTP-server may be pointed to a Hot Folder that is scanned by File Distributor and in this way will data sent by FTP be distributed by File Distributor.

Output as Groups

File Distributor can distribute the incoming data by different methods and protocols.

- Hot Folders
- TCP-sockets
- User Datagram Protocol
- FTP server
- LaserWriter's
- Windows Printers

In File Distributor will you define your outputs as *groups*. Each group may hold any number of *group items*. A group item could be a Spool Folder or an FTP-Server. If you define a group to

holdSpoolFolder all group items in that group must be SpoolFolders. You cannot create a group that contains both SpoolFolders and LaserWriter's.

Methods

There are three methods available how the data should be distributed. By setting the correct method can File Distributor also load balance on output. Load balancing usually means to use the available resources as efficient as possible. There are three methods available:

- Insequence
- Nextfree
- Sendtoall

These methods will be explained later in this guide when setting up queues.

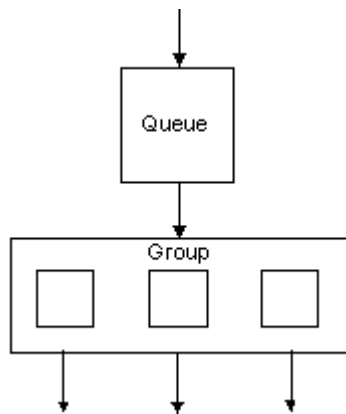


Figure. The relation between queues and groups. Each queue will be attached to a group. The group then holds any number of group items. The group item is the object that will send the incoming data.

Use with GFM-system

File Distributor can be configured to run with the GFM-system. In that case will File Distributor connect to its own GFM-engine. In the queue setup can then different scripts be started at different stages during the transfer.

Section2

Installationandconfiguration

ThissectionexplainshowtoinstallandconfiguretheFileDistributorapplication.

2.1Beforeinstalling

BeforeyouinstallFileDistributor,youmustmakesurethatyourcomputermeetsthemimum requirementspriorthinstallation.Thefollowinglististhemimumrequirements

Requirements

ThefollowinghardwareandsoftwareisrequiredfortheFileDistributorapplication:

- MicrosoftWindowsNTServerversion4.0.NotehattheITGonlyhasbeentestedonan Englishversion.
- 80486orhighermicroprocessor.RecommendedisaPentiumII450MHzorbetter.
- Aharddiskwithaminimumof5MBavailablespace.
- VGAorhigher-resolutionscreensupportedbyMicrosoftWindows
- 24MBRAM.Thisisminimumfortheapplicationtostart.Recommendedis128Mbytesor more.
- Amouseorothersuitablepointingdevice.
- InsomeinstallationwillalsotheGFM-systembeneeded.ForexampleifFileDistributor shouldgenerateIFRAtrackmessagesmusttheGFM-Engineandthe *GFMIFRATrack GeneratorModule* beinstalled.

2.2Installation

TheFileDistributorapplicationisfoundonthe *GFMServerCD* inthedirectory \GFM\APPS\FileDistributor.Inthedirectorythereisasetupprogramthatshouldbeusedwhen installingtheapplication.

Toinstalltheapplicationfollowtheseinstructions:

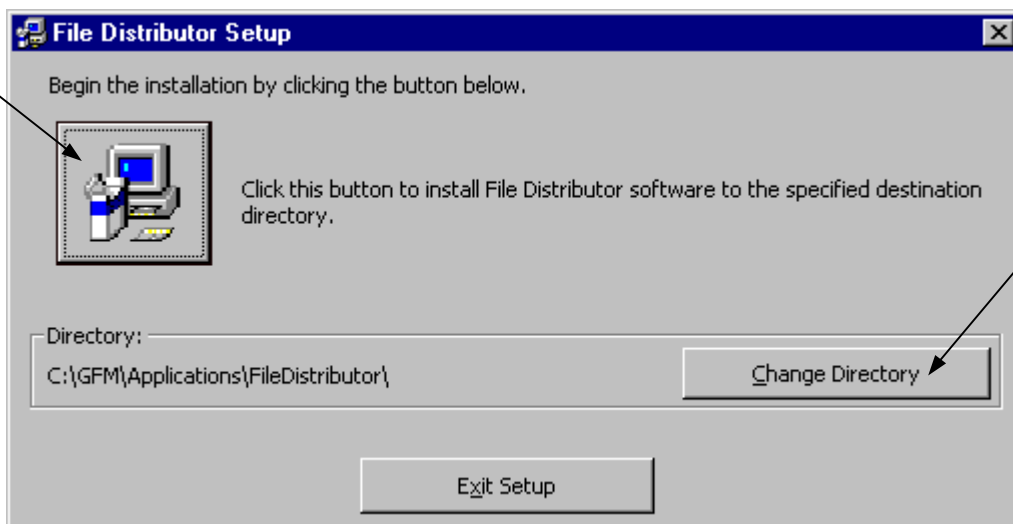
1. Endallrunningapplications.
2. Insertyou *GFMServerCD* CD-ROMinyourCD-ROMplayer.
3. Navigatetothe\GFM\APPS\FileDistributordirectoryontheCD-ROManddouble-clickthe setupprogram.

4. After a few seconds will the following menu appear on your monitor.



5. To abandon the installation click **Exit Setup** and the setup program will remove all files that has been copied to your system. To continue click the **OK** button and the following dialog box will be shown:

To install click this button



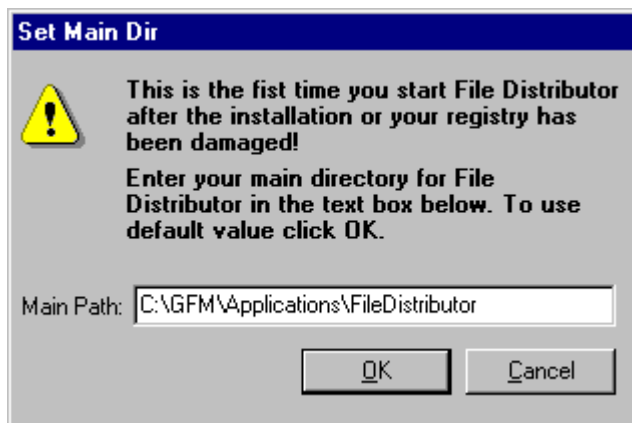
To change the directory where to install click this button

6. The setup procedure is extremely easy, the only thing to tell the setup program is the path where the applications shall be installed. The default value is C:\GFM\Applications\FileDistributor. To change this path click the Change Directory button. To install click the button in the upper left corner. To exit setup click the button Exit Setup.

Now will files be copied to your hard disk and the necessary COM objects will be registered.

The next thing to do is to configure File Distributor as described on the next pages. After the configuration you need to setup your queues and groups as described in the next sections.

Note! The first time you start File Distributor after the installation there will be a dialog box shown where you have to enter the installation directory as shown below:

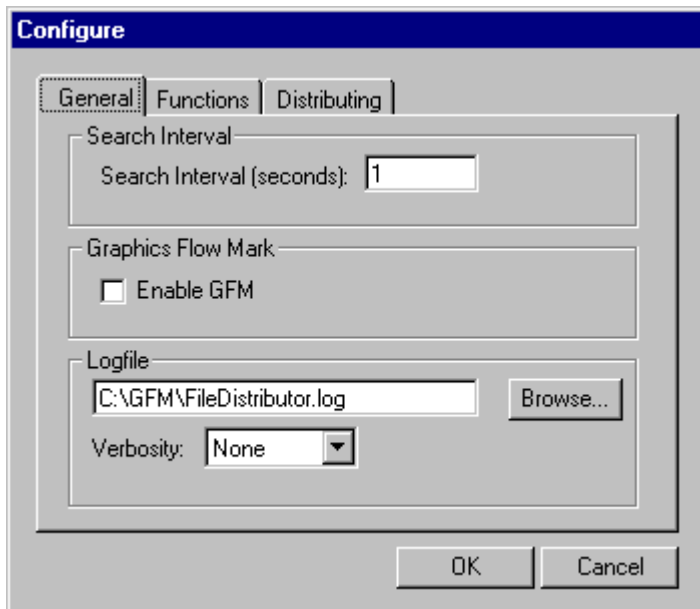


To use the default value click **OK** otherwise you have to enter the path in the text box and then click **OK**. The value that shall be entered is the same as the one where you installed File Distributor

Configuration

The configuration of File Distributor is very simple and will in most cases only be done once and that is immediately after the installation.

To access the configuration select File Distributor->Configure and the following dialog box will appear on your monitor.



The configuration dialog box has three tabs and they are explained below

General

SearchInterval(seconds)

This search interval in seconds that File Distributor will search queues that are set as the type HotFolder. This search interval may be any value between 1 and 65 seconds.

EnableGFM

By enabling this option will File Distributor connect to the GFM-engine when starting up. When this option has been selected will the scripting options in the queue setup be enabled. Also note that you must have installed the GFM-engine before reactivating this option.

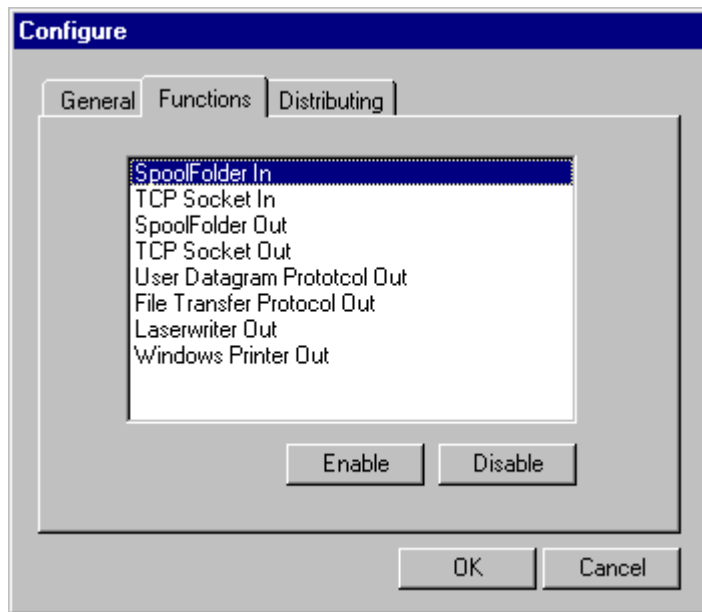
LogFile

The path where your logfile will be saved. The logfile could be useful for fault finding or just to have a log about what has been distributed.

Verbosity

Set the amount of messages written down to the logfile.

Adding functions

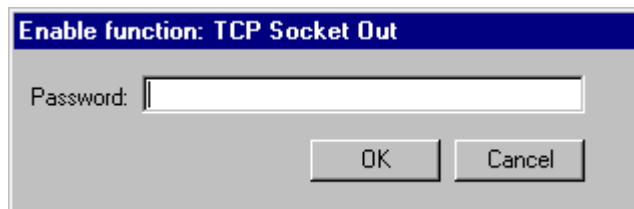


Under the Functionstab will you activated different functions in File Distributor. To activate a function you need the appropriate password. This password can be obtained from Graphic Prepress Solutions.

To activate a function follow these instructions:

Click on the function you want to activate in the listbox

Click on **Enable** and a dialog box similar to the following will be displayed:



Enter your password and click **OK**. You must now restart File Distributor to have the new function available to File Distributor. Set up your new group as described later in this guide.

To deactivate a function follow these instructions:

Click on the function you want to deactivate in the listbox

Click on **Disable** and you will be prompted that you are sure that you want to disable the function. Click **Yes** to disable **No** to cancel.

Distributing

The Distributing tab has not been implemented in this version.

Section3

Basicoperation

This section explains how to operate the FileDistributor application when it has been installed and configured.

Under normal circumstances will FileDistributor run unattended with no user interaction at all.

StartFileDistributor

To start FileDistributor double click the FileDistributor icon and the application will start.

By default will FileDistributor now be stopped. This means that no queues will be processed even if there are files waiting. To start processing you must select **FileDistributor->Start Inputs**. Now will FileDistributor process all enabled queues unattended.

StopFileDistributor

To stop inputs select **FileDistributor->StartInputs** and no queue will be processed. To exit FileDistributor select **FileDistributor->Quit** and the application will exit.

Section4

ManagingQueues

Thissectionexplainshowtosetup,editanddeletequeues.

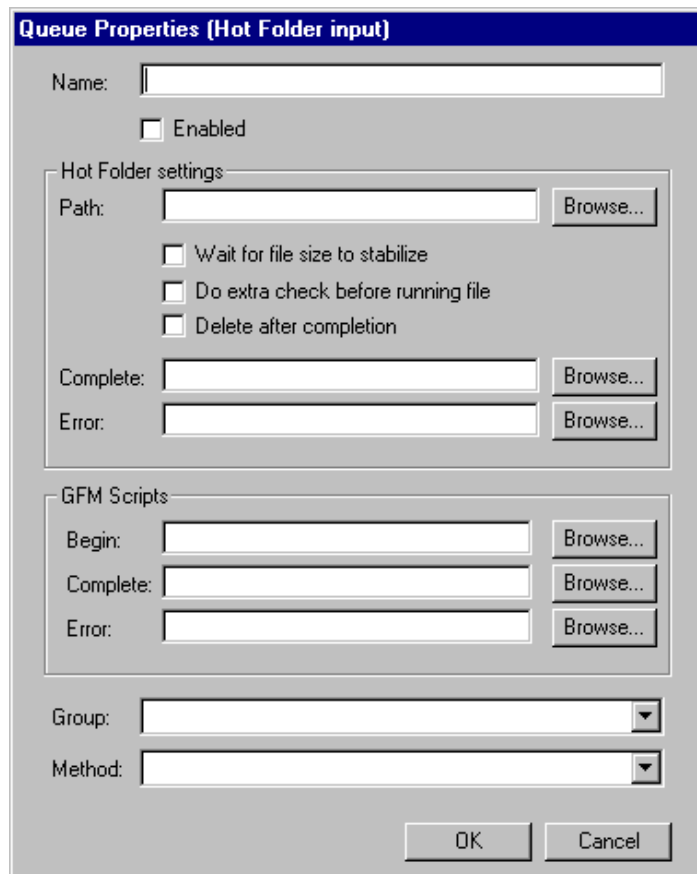
Introductiontoqueues

Allinputdata,filesordatathatshouldbedistributedbyFileDistributoraredefinedasdifferent queues.Eachqueuewillbedefinedasitsownuniquecomponentnotinterferingwithanyother queue.Typicalconfigurationinformationsavedineachqueueis:

- Thequeue type,orhowwillFileDistributorreceivethedata.Currentlytherearetwotypes howdatacanbeinputted:HotFoldersorTCP-socket.
- IfanyGFM-scriptshallbeexecutedasdistributionstarts,endsorfails.
- Thegroupthatthedata shallbesentto.Howtosetupgroupsisdescribedinthe following sections.This meansthatyoufirstmustsetupatleastonegroupbeforeyoucansetupa queue.
- Themethodhowthedata shouldbedistributed.Availablemethodsare:Insequence,Next free,Sendtoall.
- Eachqueuecanbeswitchedonoroff.

Creating a Hot Folder queue

To create a Hot Folder queue select **FileDistributor->ConfigureQueues** and click the **New** button in the Queues dialog box. In the Set Queue Type dialog box select Hot Folder input as the input and click OK and the following dialog box will appear on your screen:



The dialog box is titled "Queue Properties (Hot Folder input)". It contains the following fields and controls:

- Name:** A text input field.
- Enabled:** A checkbox.
- Hot Folder settings:** A group box containing:
 - Path:** A text input field with a "Browse..." button.
 - Wait for file size to stabilize:** A checkbox.
 - Do extra check before running file:** A checkbox.
 - Delete after completion:** A checkbox.
 - Complete:** A text input field with a "Browse..." button.
 - Error:** A text input field with a "Browse..." button.
- GFM Scripts:** A group box containing:
 - Begin:** A text input field with a "Browse..." button.
 - Complete:** A text input field with a "Browse..." button.
 - Error:** A text input field with a "Browse..." button.
- Group:** A dropdown menu.
- Method:** A dropdown menu.
- OK** and **Cancel** buttons at the bottom.

The following part will explain each item in the above dialog box.

Name

You must give your new queue a new and unique name. If you enter a name that already exists, you will be prompted to rename your queue.

Enabled

By selecting this option, this queue will be enabled. This means that FileDistributor will scan the directory entered under **Path** and if a file is in that directory, it will be processed as defined in this queue. If this option is not selected, this queue will never be scanned.

Path

The path to the directory or Hot Folder to scan. By clicking the Browse button, you can navigate to the directory with standard window techniques.

Wait for file size to stabilize

When enabled, FileDistributor will not wait for operating messages saying if the file is locked or not, but will look if the size of the incoming file is increasing or not. The time interval is set in the **Configured** dialog box as the **SearchIntervalInSec** value. If the file size is the same after one search interval, FileDistributor will assume that all data has been written to the file.

If disabled will File Distributor depend on the operating system telling if the file is locked or not.

Note! Do only enable this option if you have problems with File Distributor picking up files before they have completely been received by File Distributor. You should always try to use the **Do extra check before running file** first. By enabling this option you will slow down the performance of File Distributor as File Distributor has to scan all queues where this option is enabled twice.

Do extra check before running file

This option has different meanings depending on if the **Wait for file size to stabilize** checkbox has been enabled or not.

If the **Wait for file size to stabilize** checkbox is unchecked will File Distributor try to rename the incoming file, and thereby receive messages from the operating system if the file is locked or not. If the file isn't locked will the file be renamed back to its original name again and the group associated to the queue will be sent the file.

If the **Wait for file size to stabilize** checkbox is checked will File Distributor try to move the incoming file to a TEMP directory, and thereby receive messages from the operating system if the file is locked or not. If the file isn't locked will the file be moved back to its original place again and the GFM script associated to the process will be started.

Delete after completion

When checked will the file in the Path be deleted once it has been distributed. If unchecked will the file be moved to the Completed directory. Note that under some circumstances will the file be moved by the group. If you for example distribute files to Spool Folders and the Operation is set to Move to folder will the file be moved by the group and you cannot move the file to the completed directory.

Complete

The directory where files will be saved if the Delete after completion isn't enabled.

Error

The directory where files will be saved if an error occurs during distribution. What an error means depends in the type of group connected to the queue.

GFM Scripts

The GFM Script option will only be enabled if you have installed the GFM-engine and the Use GFM option has been selected in the configuration. In all cases will Global Strings be set as below:

Index	Object
1	The current file.
2	The folder name.
3	The error name as a string. Will only be set if the script to run is the error script.
4	The details of the error, only for FTP groups currently. Will only be set if the script to run is the error script.

Begin

The script that will be executed just before the file is sent for distribution. When the script is started will the file still be in the Path directory.

Complete

The script that will be executed just after the file has been distributed. When the script is started will the file still be in the Path directory.

Error

If an error occurs during distribution will this GFM-script be executed. When the script is started will the file still be in the Path directory. Immediately after the script has been executed will the file be moved to the error directory.

Group

The group that should be used by this queue.

Method

The method used when distributing the file. The methods are the following.

- In sequence—If the group holds three group items will File Distributor send to item 1, item 2, item 3 and then start with item 1 again.
- Next free—Will take the group item that is free.
- Send to all—Send to all items in the group.

Creating a TCP-socket input queue

Introduction to Socket

A socket is a hardware-independent method of communicating across a network. The File Distributor plugin supports TCP/IP on Ethernet for job transfer between any combination of machines running the UNIX or Windows NT operating systems.

The benefits of using network sockets are:

- Transfer of jobs between different types of machines occurs at network speeds—typically much higher than those achieved with serial links.
- One server machine (the one running File Distributor) can receive input from as many sending machines as can connect to the network.
- All sending machines are configured in the same way.
- Given an existing network, there is no requirement for extra hardware or shared file systems.
- It requires a small amount of central network management, or user access to configuration files, on the sending and receiving machines. This management or user access is required only when setting up the links, not for routine use.

To create a Hot Folder queue select **File Distributor->Configure Queues** and click the **New** button in the Queues dialog box. In the Set Queue Type dialog box select TCP-socket input as the input and click OK and the following dialog box will appear on your screen:

Section5

ManagingSpoolFoldergroups

Thissectionexplainshowtosetup,editanddeleteSpoolFoldergroups.

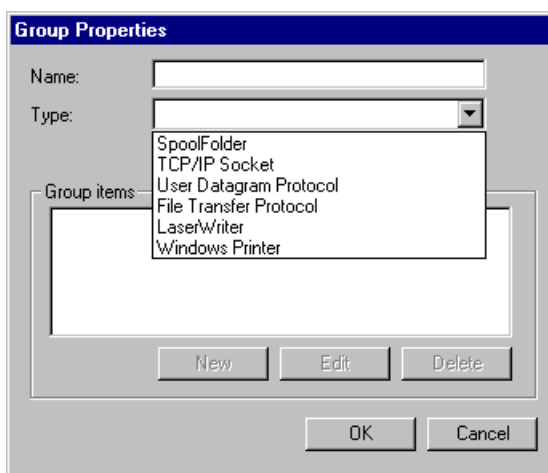
Note!TobeabletouseSpoolFoldergroupsyoumustenablethe **SpoolFolderOut** function first.I.e.youmusthavetheappropriatepasswordtobeabletoactivatetheSpoolFolderOut protocol.

IntroductiontoSpoolFolders

FileDistributorwillallowyoutodistributedatatodifferentfolders.Thefoldermaybealocal ornetworkedfolder.Thedatacanbemovedtoafolderorcopiedtoafolder.Youcanalso loadbalanceonSpoolFoldersbysettingthecorrectmethodinthequeueconnectedtothe SpoolFoldergroup.

CreatingaSpoolFoldergroup

TocreateaSpoolFoldergroupselect **FileDistributor->ConfigureGroups** andclickthe **New** buttonintheGroupsdialogbox.IntheGroupPropertiesdialogboxgiveyournewgroupa nameandselectSpoolFolderintheTypecomboboxasshownbelow.

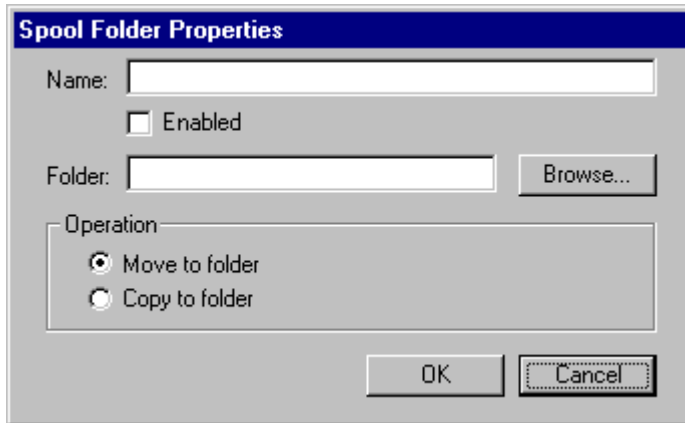


Nowclick **OK**andyournewgroupwillbeaddedtotheGroupsdialogbox.

Selectyournewgroupandclickthe **Edit** button.Nowcanyouaddanumberoffolderstothe groupasgroupitemsthatthisgroupwillsenddatato.

Adding Spool Folder group items

Once the Spool Folder group has been created can you add group items to the group. In this case will this mean to add folders that we want to distribute data to. To add a Spool Folder select the new group in the Groups dialog box and click the New button. The dialog box below shows how to set up a Spool Folder group item:



The following part explains each setting in the Spool Folder Properties dialog box.

Name

You must give your new group item a new and unique name. If the name already exists will you be prompted to rename your new group item.

Enabled

Once selected will this group item be used in this group. If not selected will this group item not be used.

Folder

The path to the folder where data should be distributed. By linking the Browse button can you navigate to the folder with standard window techniques.

Operation

The operation sets if the data incoming file from the queue should be copied or moved.

Move to folder

Move the file to the folder. If you select this option will you not be able to use the ability to move the file to the completed directory in the queue as the group already has moved the file.

Copy to folder

Copy the file to the folder.

Edit a Spool Folder group

To edit a Spool Folder group select **File Distributor->Configure Groups** and click the group you wish to edit in the Groups dialog box. In the Group Properties dialog box select the Spool Folder group item you wish to edit and click **Edit**.

Delete a Spool Folder group

To delete a Spool Folder group select **File Distributor->Configure Groups** and click the group you wish to delete in the Groups dialog box and click **Delete**. You will now be asked if you

are certain that you wish to delete this group as this also will remove all group items that belong to this group. By clicking **Yes** will the group be deleted. By clicking **No** will the group not be deleted.

Delete a Spool Folder group item.

In the same way as you can delete a group, you can delete a group item in the selected group. To delete a group item, select the group in the Groups dialog box and click **Edit**. Now select the group item you wish to delete and click **Delete**. You will now be asked if you are certain that you wish to delete this group item. By clicking **Yes** will the group item be deleted. By clicking **No** will the group item not be deleted.

Section6

ManagingTCP/IPsocketgroups

IntroductiontoTCP/IPsocket

Asocketisahardware-independentmethodofcommunicatingacrossanetwork.TheFile Distributorplugin supportsTCP/IPonEthernetforjobtransferbetweenanycombinationof machinesrunningtheUNIXorWindowsNToperatingsystems.

Thebenefitsofusingnetworksocketsare:

- Transferofjobsbetween differenttypesofmachinesoccursatnetworkspeeds—typically muchhigherthanthoseachievedwithseriallinks.
- Oneservermachine(theonerunningFileDistributor)canreceiveinputfromasmany sendingmachinesascanconnecttothenetwork.
- Allsendingmachinesareconfiguredinthesameway.
- Givenanexistingnetwork,thereisnorequirementforextrahardwareorsharedfile systems.
- Itrequiresasmallamountofcentralnetworkmanagement,oruseraccesstoconfiguration files,onthesendingandreceivingmachines.Thismanagementoruseraccessisrequired onlywhensettingupthelinks,notforroutineuse.

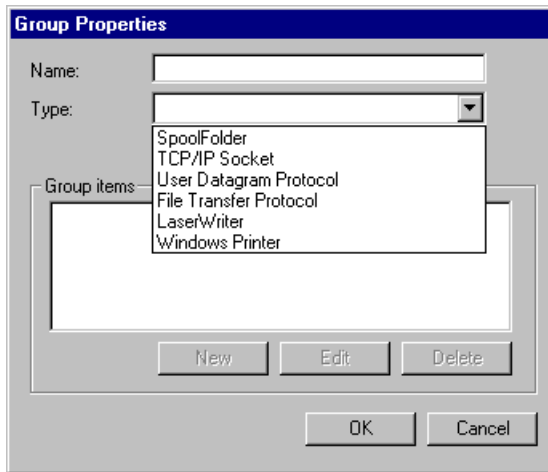
TheTransferControlProtocolallowsyoutocreateandmaintainaconnectiontoaremote computer.Usingtheconnection,bothcomputerscanstreamdatabetweenthemselves.

InFileDistributor,youmustknowtheservercomputer'snameorIPaddressalsoknownasthe **HostName**, aswellastheport, **HostPort** onwhichitwillbelistening.

Onceaconnectionhasbeenmade,eithercomputercansendandreceivedata.

Creating a TCP-socket group

To create a TCP-socket group select **FileDistributor->ConfigureGroups** and click the **New** button in the Groups dialog box. In the Group Properties dialog box give your new group a name and select TCP /IP Socket in the Type combo box as shown below.

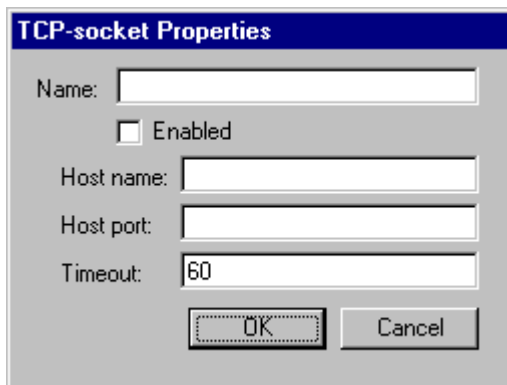


Now click **OK** and your new group will be added to the Groups dialog box.

Select your new group and click the **Edit** button. Now you can add any number of folders to the group as group items that this group will send data to.

Adding TCP-socket group items

Once the TCP-socket group has been created, can you add group items to the group. In this case, will this mean to add sockets that we want to distribute data to. To add a TCP-socket, select the new group in the Groups dialog box and click the **New** button. The dialog box below shows how to set up a TCP-socket group item:



The following part explains each setting in the TCP-socket Properties dialog box.

Name

You must give your new group item a new and unique name. If the name already exists, will you be prompted to rename your new group item.

Enabled

Once selected, will this group item be used in this group. If not selected, will this group item not be used.

HostName

Sets the remote machine to which connect to. You can either provide a hostname, for example, "FTP://ftp.microsoft.com," or an IP address string in dotted format, such as "100.0.1.1".

HostPort

Sets the remote port number to connect to.

Timeout

The timeout in seconds that File Distributor will try to connect the remote machine.

Edit a TCP-socket group

To edit a TCP-socket group select **File Distributor->Configure Groups** and click the group you wish to edit in the Groups dialog box. In the Group Properties dialog box select the TCP-socket group you wish to edit and click **Edit**.

Delete a TCP-socket group

To delete a TCP-socket group select **File Distributor->Configure Groups** and click the group you wish to delete in the Groups dialog box and click **Delete**. You will now be asked if you are certain that you wish to delete this group as this also will remove all group items that belong to this group. By clicking **Yes** will the group be deleted. By clicking **No** will the group not be deleted.

Delete a Spool Folder group item.

In the same way as you can delete a group you can delete a group item in the selected group. To delete a group item select the group in the Groups dialog box and click **Edit**. Now select the group item you wish to delete and click **Delete**. You will now be asked if you are certain that you wish to delete this group item. By clicking **Yes** will the group item be deleted. By clicking **No** will the group item not be deleted.

Section7

ManagingUserDatagramProtocolgroups

Notyetimplemented.

.

Section8

ManagingFileTransferProtocolgroups

Thissectionexplainshowtsetup,editanddeleteFileTransferProtocol(FTP)groups.

Note!TobeabletouseFTPgroupsyoumustenablethe **FileTransferProtocolOut** function first.I.e.youmusthavetheappropriatepasswordtobeabletoactivatetheFTPOutprotocol

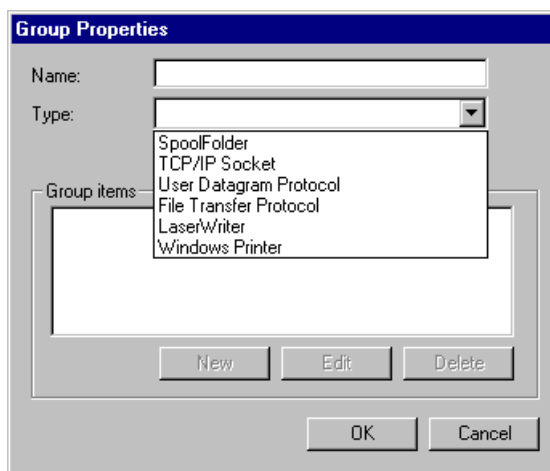
IntroductiontoFTP

TheFileDistributorapplicationwillallowyoutoautomaticallysendfilesoverFileTransfer Protocol,FTP,byloggingontoFTPserversandsendfiles.FTPis anInternetclient-server protocolfortransferringfilesbetweencomputers.Youcansetupanunlimitednumberof connectionsandbymovingfilestodifferentpredefined'hotfolders'sendthemtothe predefinedFTP-servers.Theoperationisdoneinthebackgroundallowingyoutocontinuewith othertasksonyoursystemasthetransfercontinues.Theapplicationcanalsoupdatethe PageNetdatabaseasfiles hasbeentransferredandrundifferentscriptsasatransferstarts,has beencompletedorifanerroroccursduringthetransfer.

CreatinganFTPgroup

To createanFTPgroupselect **FileDistributor->ConfigureGroups** andclickthe **New**button intheGroupsdialogbox.

IntheGroupPropertiesdialogboxgiveyournewgroupanameandselectFileTransfer ProtocolintheTypecombobox.Nowclick **OK**andyournewgroupwillbeaddedtothe Groupsdialogbox.

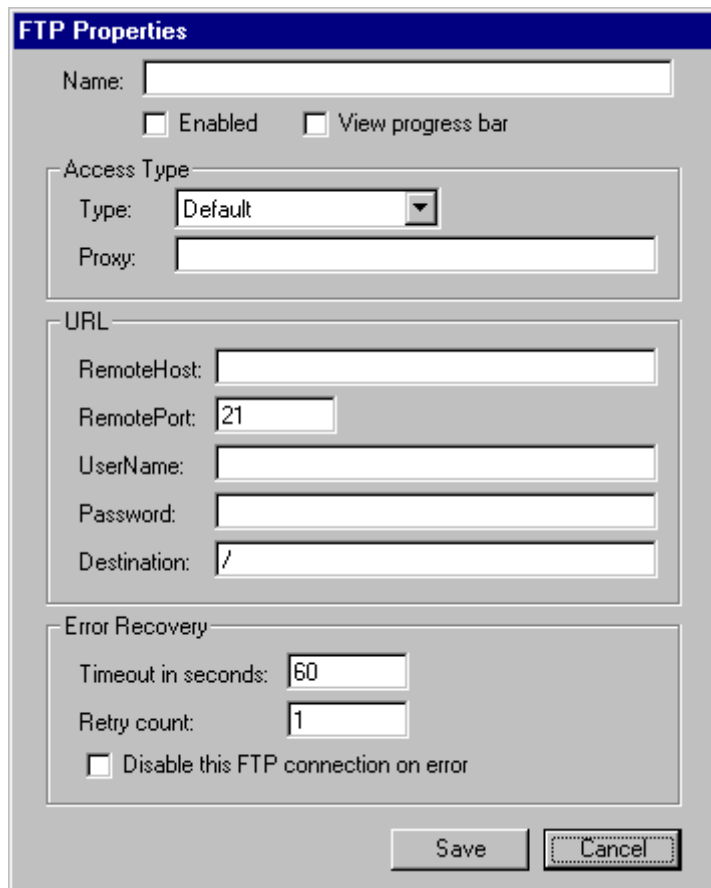


Select your new group and click the **Edit** button. Now you can add a new FTP-server to the group as a group item that this group will distribute data to as explained below.

Note! Normally will an FTP group only hold one group item, or one FTP-server, as you cannot load balance on FTP-servers. The only situation where there should be more than one FTP-server in a group is if you would like to distribute the same data to more than one FTP-server.

Adding a FTP group item

Once the FTP group has been created you can add group items to the group. In this case will this mean to add any FTP-server that we want to send data to. To add an FTP-server click the New button in the Group Properties dialog box and the following dialog box will appear on your monitor.



The image shows a Windows-style dialog box titled "FTP Properties". It contains several sections for configuring an FTP connection. At the top is a "Name:" text field. Below it are two checkboxes: "Enabled" and "View progress bar". The "Access Type" section includes a "Type:" dropdown menu set to "Default" and a "Proxy:" text field. The "URL" section contains fields for "RemoteHost:", "RemotePort:" (set to 21), "UserName:", "Password:", and "Destination:" (set to "/"). The "Error Recovery" section has "Timeout in seconds:" (set to 60) and "Retry count:" (set to 1), along with a checkbox "Disable this FTP connection on error". At the bottom right are "Save" and "Cancel" buttons.

Name

You must give your new group item a new and unique name. If the name already exists will you be prompted to rename your new group item.

Enabled

Once selected will this group item be used in this group. If not selected will this group item not be used.

View progress bar

When enabled will a progress bar be shown as the transfer to the remote system occurs. When disabled will the progress bar not be shown.

Type

In order to make any kind of connection to the Internet, you must determine how your computer is connected to the Internet. If you are on an Intranet, you will probably be connected to the Internet via a proxy server.

The Access Type will set the type of access (through a proxy or directly) that the connection will use to communicate with the Internet. The options are the following:

Default. Use Defaults. The connection uses default settings found in the registry to access the Internet.

Direct Direct to Internet. The connection has a direct connection to the Internet.

Named Proxy Named Proxy. Tell the connection to use the proxy servers specified in the Proxy settings as described below.

Proxy

In short, a *proxy server* is an intermediary between your computer and the Internet. All computers on an Intranet that need to connect to the Internet must do so through a proxy server. Thus the proxy functions as a *firewall* between the Intranet and the Internet, discarding invalid end-user and external requests, thereby protecting the Intranet from hostile actions.

To find the proxy settings on your computer

1. On the Taskbar of your computer, click Start.
2. On the Settings item, click the Control Panel.
3. Double-click the Internet icon.
4. On the Internet Properties dialog box, click Connection.
5. Under Proxy Server, confirm that the Connect Through a Proxy Server checkbox is selected.
6. If it is selected, click Settings. The name of proxy servers you use for various protocols will be found in the dialog box. If no proxy is defined, contact your system administrator for available proxy servers.
7. If it is not selected, you will probably be connected to the Internet directly and you should select Direct in the Type combo box.

Remote Host

Set the remote machine to which a connection sends data. You can either provide a hostname, for example, "ftp://ftp.microsoft.com," or an IP address string in dotted format, such as "100.0.1.1".

Remote Port

Set the remote port number to connect to. For FTP is the port almost always 21 and this is the default value.

UserName

Set the name that will be sent with requests to remote computers. If this property is left blank, the connection will send "anonymous" as the username when requests are made.

Password

Set the password that will be sent with the request to log on to remote computers. If this property is left blank, the connection will send a blank password or the current user's email name.

Destination

Sets the destination directory on the remote system. The destination must always have preceding and trailing slashes.

Timeout in seconds

Sets the timeout in seconds that File Distributor will try to establish contact with the remote FTP-server. If timeout occurs check your network or that the remote system is running.

Retry count

The number of retries that File Distributor will do if an error occurs during the transfer.

Disable this FTP connection on error

When checked will this FTP connection be disabled on error. In other words if an error occurs will this FTP connection never be used until a user manually enables the connection again.

Edit an FTP group

To edit an FTP group select **File Distributor->Configure Groups** and click the group you wish to edit in the Groups dialog box. In the Group Properties dialog box select FTP group item you wish to edit and click **Edit**.

Delete an FTP group

To delete an FTP group select **File Distributor->Configure Groups** and click the group you wish to delete in the Groups dialog box and click **Delete**. You will now be asked if you are certain that you wish to delete this group as this will also remove all group items that belong to this group. By clicking **Yes** will the group be deleted. By clicking **No** will the group not be deleted.

Delete an FTP group item.

In the same way as you can delete a group you can delete a group item in the selected group. To delete a group item select the group in the Groups dialog box and click **Edit**. Now select the group item you wish to delete and click **Delete**. You will now be asked if you are certain that you wish to delete this group item. By clicking **Yes** will the group item be deleted. By clicking **No** will the group item not be deleted.

Section9

ManagingLaserWriterGroups

Notyetimplemented.

Section 10

Managing Windows Printer groups

This section explains how to set up Windows Printer groups.

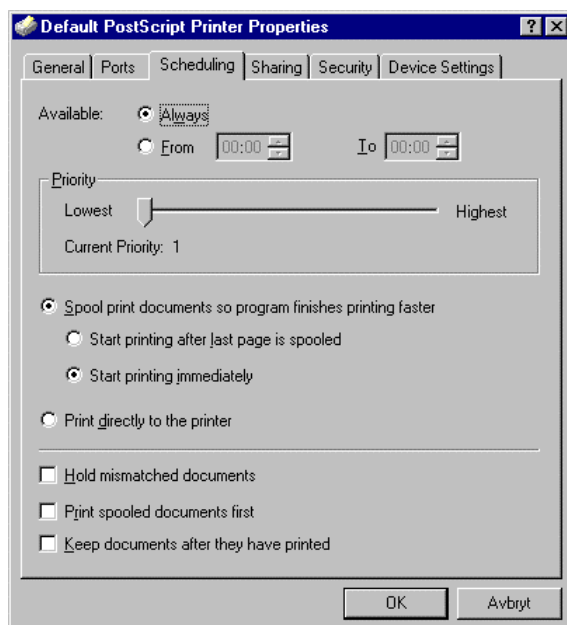
Note! To be able to use Spool Folder groups you must enable the **Windows Printer Out** function first. I.e. you must have the appropriate password to be able to activate the Windows Printer Out protocol.

Introduction to Windows Printer

In File Distributor, a Windows Printer is any printer, local or networked, that has been installed on the computer running File Distributor. This may be an AppleTalk device, a TCP device or any other printer that can be accessed from the computer.

File Distributor will allow you to distribute data to any of these Windows Printers. There is though one restriction:

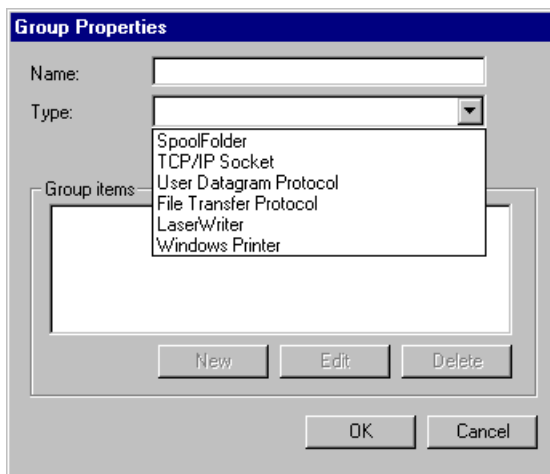
- You must enable spooling for the printer that should be used by File Distributor. In the dialog box below are you not allowed to select **Print directly to the printer** but you must select **Spool print documents so program finishes printing faster**.



To access the above dialog box select **Start->Settings->Printers** and double-click on the appropriate printer.

Creating a Windows Printer Group

To create a Spool Folder group, select **File Distributor -> Configure Groups** and click the **New** button in the Groups dialog box. In the Group Properties dialog box, give your new group a name and select Windows Printer in the Type combo box as shown below.

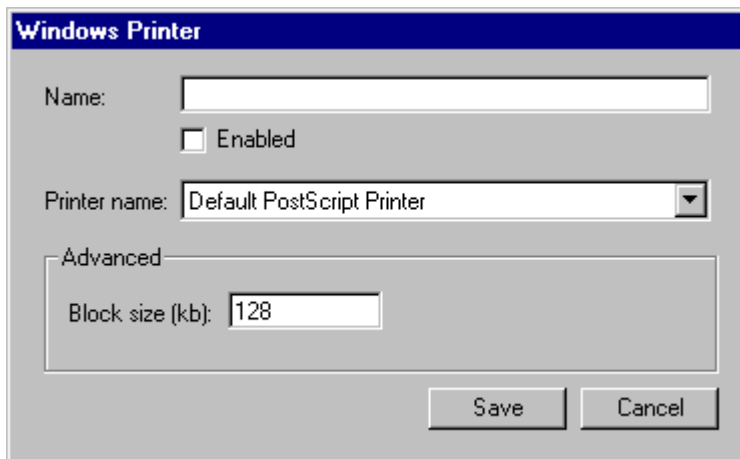


Now click **OK** and your new group will be added to the Groups dialog box.

Select your new group and click the **Edit** button. Now you can add any number of Windows Printers to the group as group items that this group will send data to.

Adding Windows Printer group items

Once the Windows Printer group has been created, can you add group items to the group. In this case, will this mean to add printers installed on your system that we want to distribute data to. To add a Windows Printer, select the new group in the Groups dialog box and click the **New** button. The dialog box below shows how to set up a Windows Printer group item:



The following part explains each setting in the Windows Printer dialog box.

Name

You must give your new group item a new and unique name. If the name already exists, will you be prompted to rename your new group item.

Enabled

Once selected, will this group item be used in this group. If not selected, will this group item not be used.

Printername

In the combobox select the printer for this group item. All installed printers should appear in the combobox list.

BlockSize

The block size sets the size in number kilobytes sent to the printer spooler in each block. The default value is 128 kb.

Edit a Windows Printer group

To edit a Spool Folder group select **File Distributor->Configure Groups** and click the group you wish to edit in the Groups dialog box. In the Group Properties dialog box select the Windows Printer group item you wish to edit and click **Edit**.

Delete a Windows Printer group

To delete a Windows Printer group select **File Distributor->Configure Groups** and click the group you wish to delete in the Groups dialog box and click **Delete**. You will now be asked if you are certain that you wish to delete this group as this will also remove all group items that belong to this group. By clicking **Yes** will the group be deleted. By clicking **No** will the group not be deleted.

Delete a Windows Printer group item.

In the same way as you can delete a group you can delete a group item in the selected group. To delete a group item select the group in the Groups dialog box and click **Edit**. Now select the group item you wish to delete and click **Delete**. You will now be asked if you are certain that you wish to delete this group item. By clicking **Yes** will the group item be deleted. By clicking **No** will the group item not be deleted.